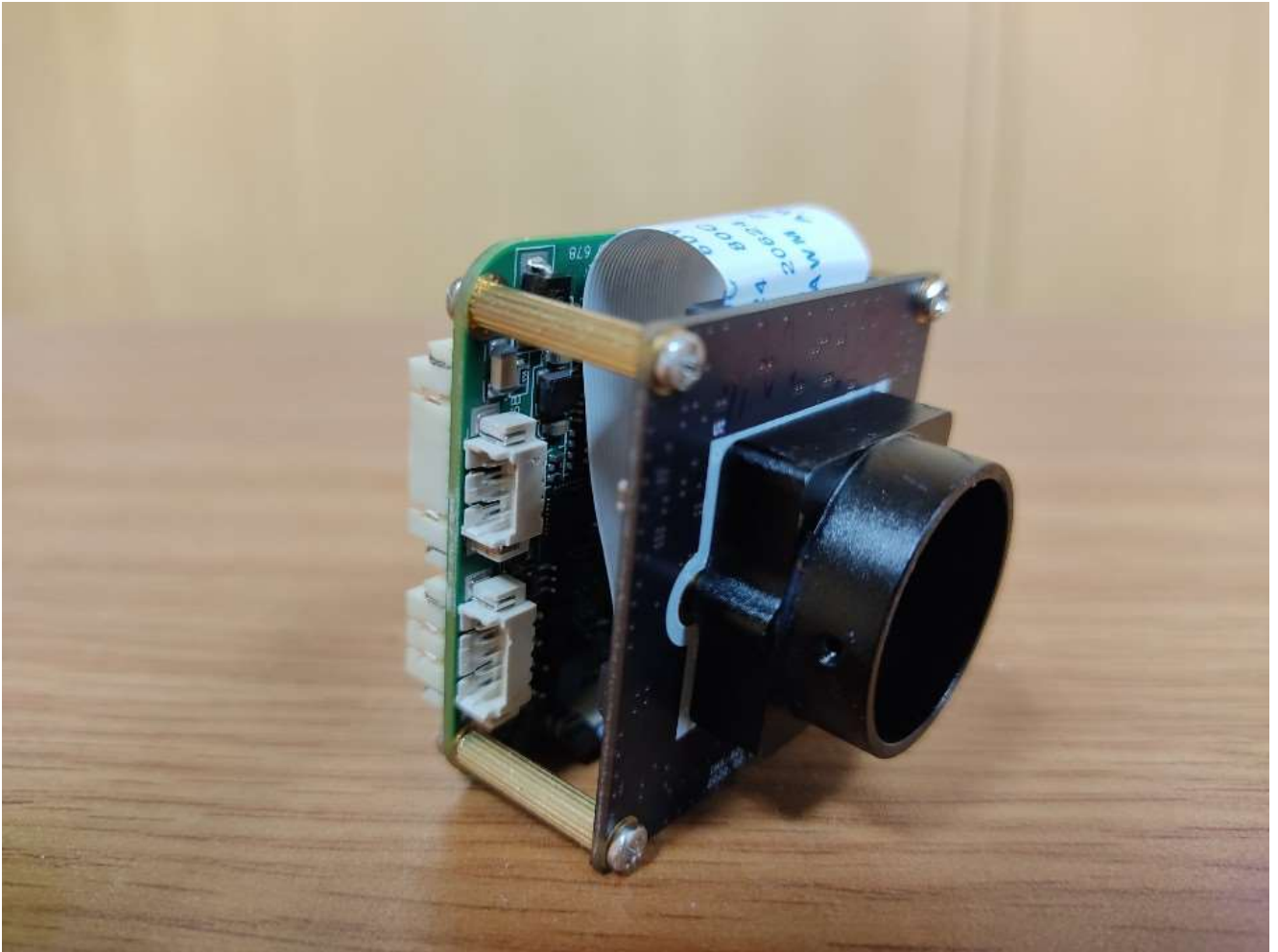


IMC-8431M IP Camera

Global Shutter CMOS Camera



2048 x 2536 3Mega Pixel

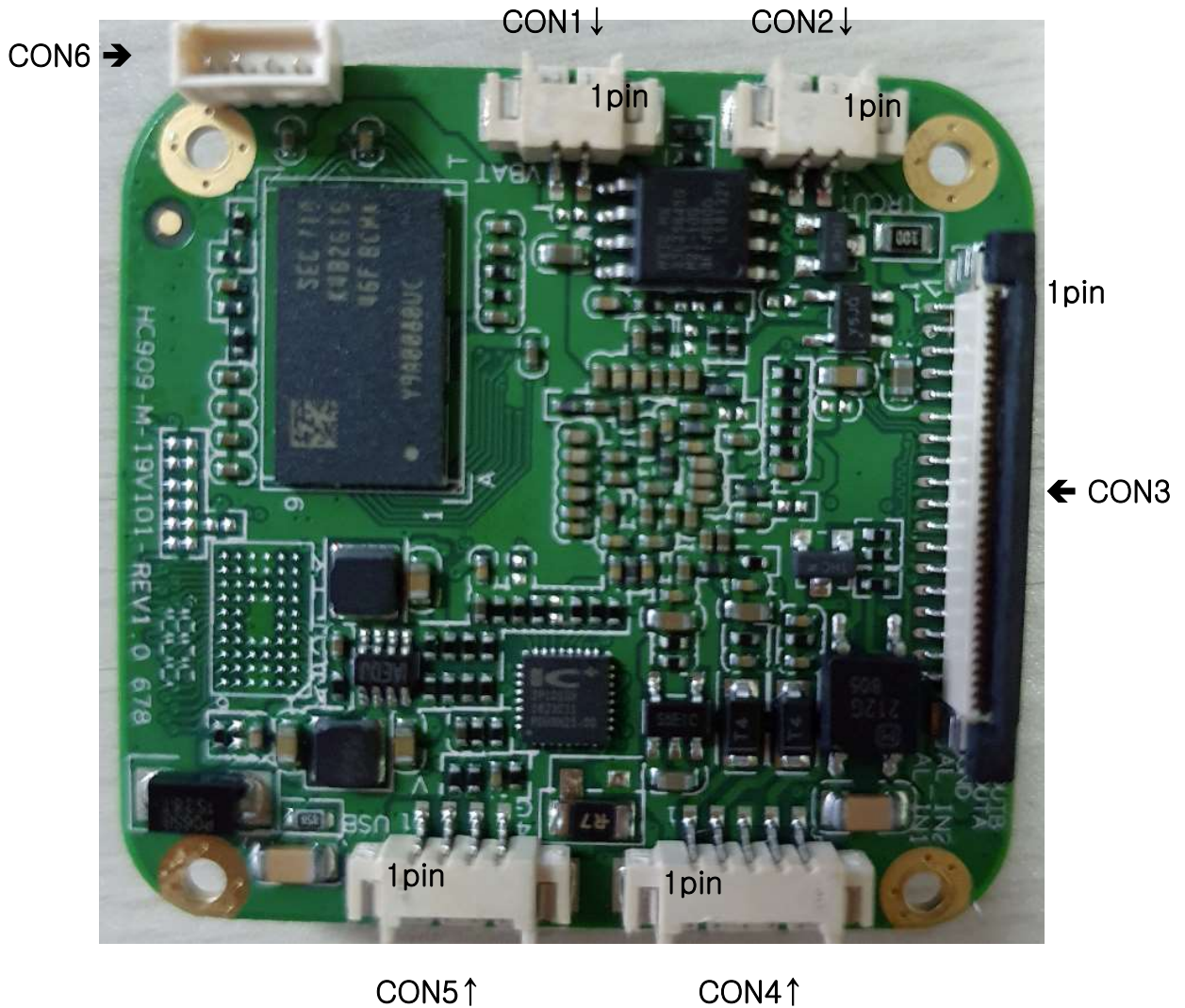
IMC-8431M SPECIFICATIONS

IMAGE	
Image Sensor	Sony 1/1.8", 3Megapixel Global CMOS
Number of Effective Pixels	2048(H) x 1536(V) / 1920(H) x 1080(V)
Scanning Mode	Progressive Scan (Global shutter)
CAMERA	
Day and Night Mode	External, Automatic, Manual (Day, Night)
Noise Reduction	2D-NR, 3D-NR
Auto Exposure Mode	Auto, Manual
Shutter Speed Control	Automatic: Min. 1/50000 sec ~ Max. 1/30 sec
Gain Control	Automatic: 0 ~ 50, Default 50
Auto White Balance Mode	ATW-Indoor/Outdoor, Manual
Lens (Option)	12~40mm / F 1.0~2.1
Image size	1/1.8"
Focus, Zoom	Motorize One-Push Auto Focus
On Screen Display	On/Off
Image Effect	Mirror, Flip
Privacy Mask	Max.6 Area Selection
Video Motion Detection	Max.8 Area Selection
Defog	On/Off
Dead Pixel Compensation	On/Off
Focus Mode	Auto / Manual
NETWORK	
Video Compression	H.264, H.265, MJPEG
Video Resolution	1 st Stream 2048x1536, 1920x1080, 1600x1200, 1280x1024, 1280x960, 1280x800, 1280x720, 720x480, 640x480, 352x288, 320x240, 176x144, 2 nd Stream 720x480 3 rd Stream 320x240
Video Frame Rate	Up to 30fps@2048x1536p / 1920x1080p
FTP Uploading	JPEG Still Image
Event In	SW Trigger/Motion
Event Out Notification	E-mail, FTP, Syslog
Manual Trigger	Still Image Capture
Security	Multi User Authority, IP Filtering
Network Time Sync	NTP Server, Manual
Software Reset	Restart, Reset, Factory Default
Remote Upgrade	Using Web Browser
Protocols	IPv4, HTTP, TCP, RTSP, RTP, RTCP, UDP, SMTP, FTP, ICMP, DHCP, UPnP, Bonjour, ARP, DNS, DynDNS, SNMP, syslog, 802.1x, PPPoE
Client Software	Built-In Web, ONVIF Compatible 3rd Party VMS
Max. User Connection	10 Users
SDK Support	API, ONVIF Profile S Compliant
EXTERNAL IN/OUT	
Ethernet Tx/Rx	RJ-45(10/100Base-T)
IR_LED Control	IR_LED Control On/Off
Day & Night Control	CDS, Auto, Manual
Iris Control	Auto, Manual
CDS Sensitivity	1 ~ 11 (Strong)
RS485	-
POWER	DC +12V Input

※ Specifications are subject to change without notice in advance.

IMx-8431 Pin map

1. ISP Board Top-side Specifications



1) Connector

(1) CON1(53048-0210) Connector

Pin No.	Description	
1	X	Can not be used
2	X	Can not be used

(2) CON2(53048-0210) IRIS-control Connector

Pin No.	Description	
1	IRIS_Control	Output
2	X	Can not be used

(3) CON3(FFC-0.5mm-36P) Image sensor Connector

Pin No.	Description	
1~36	X	Can not be used

(4) CON4(53048-0510) CDS & Alarm Connector

Pin No.	Description	
1	Alarm	Input
2	CDS	Input
3	GND	
4	Alarm	Can not be used
5	Alarm	Can not be used

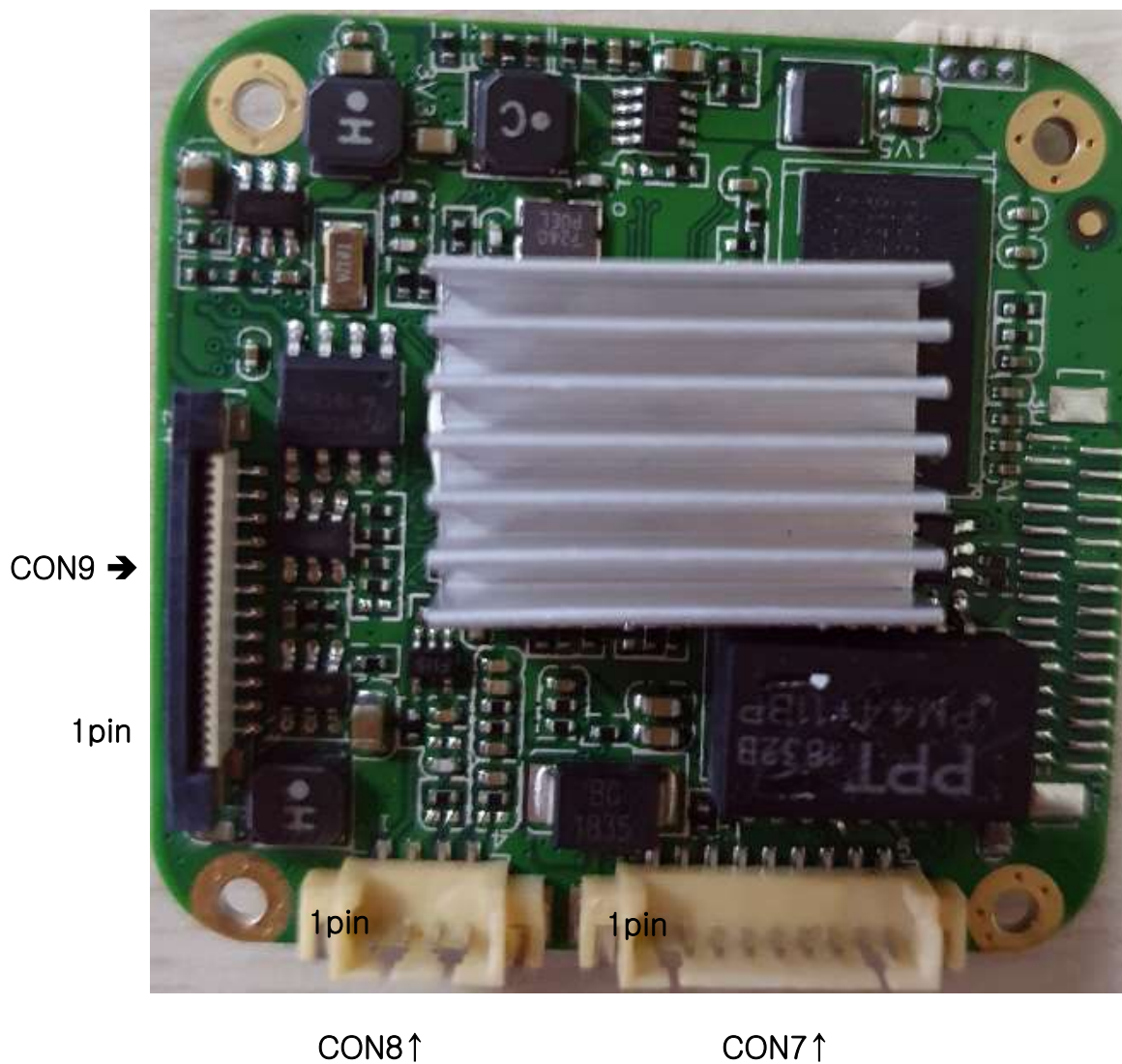
(5) CON5(53048-0410) CDS & Alarm Connector

Pin No.	Description	
1	X	Can not be used
2	X	Can not be used
3	X	Can not be used
4	GND	

(6) CON6(53048-0410) Connector

Pin No.	Description	
1	X	Can not be used
2	X	Can not be used
3	X	Can not be used
4	X	Can not be used

2. ISP Board Bottom-side Specifications



(7) CON7(53047-0410) Power & Ethernet Connector

Pin No.	Description	
1	12VDC	Power Input
2	GND	Power Input
3	Eth-Link LED	Output
4	Eth-Data LED	Output
5	Eth-TD-	100Base-T Ethernet
6	Eth-TD+	
7	Eth-RD-	
8	Eth-RD+	
9	X	Can not be used

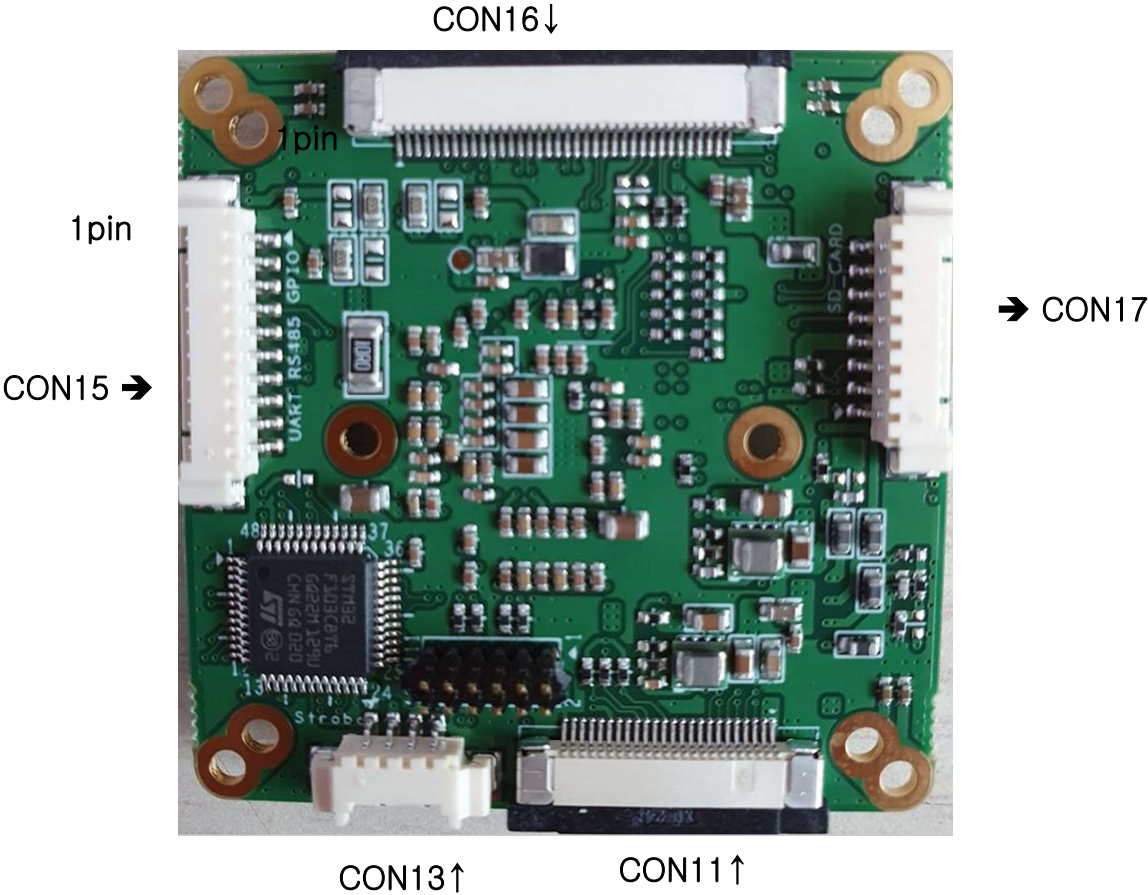
(8) CON8(53047-0910) CVBS Connecto

Pin No.	Description	
1	CVBS	Output
2	GND	
3	X	Can not be used
4	X	Can not be used

(9) CON9(FFC-0.5mm-24P) UART & SD Connector

Pin No.	Description	
1~2	5VDC	Output
3	SD_CLK	SD_CARD
4	SD_DATA0	
5	SD_DATA1	
6	SD_DATA2	
7	SD_DATA3	
8	SD_CMD	
9	SD_DET	
10	GND	
11~14	X	Can not be used
15	Alarm	Output
16~17	X	Can not be used
18	UART_RX	Input
19	UART_TX	Output
20	SD_VOUT	SD_CARD
21~23	X	Can not be used
24	GND	

3. Image Board Bottom-side Specifications

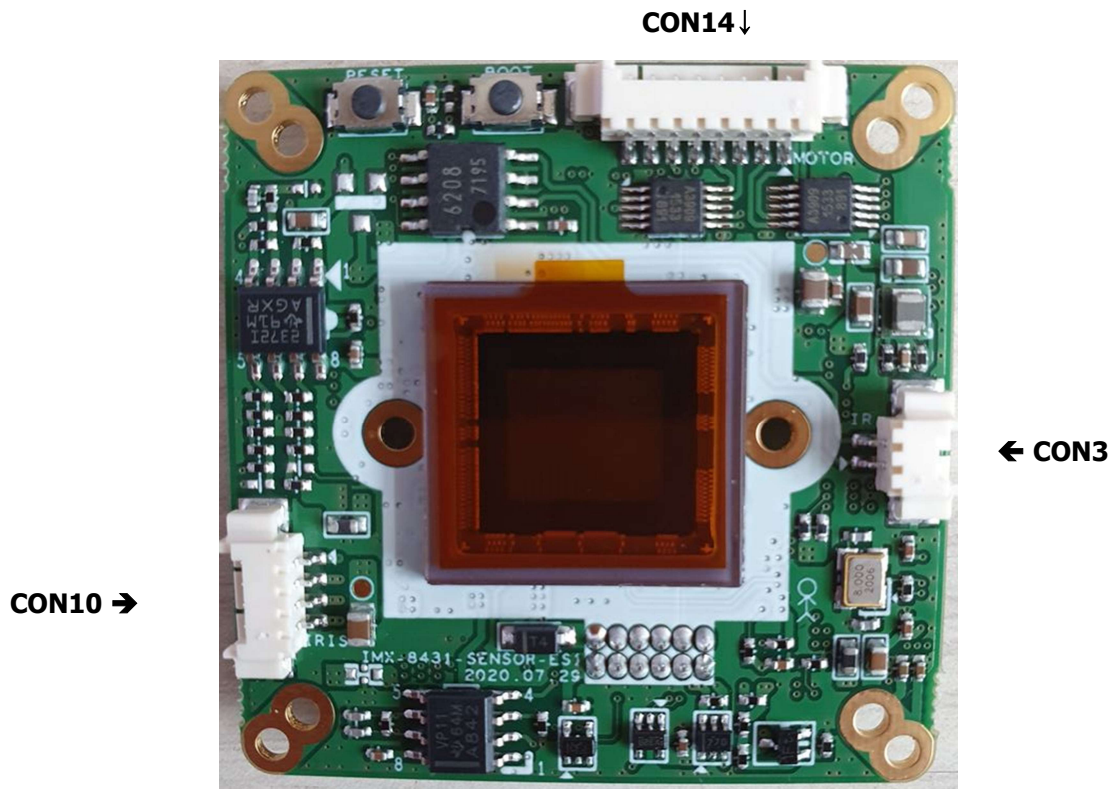


(1) CON11(FFC-0.5mm-24P) I/O Connector

Pin No.	Description	
1~24	X	Can not be used

(2) CON13 (53048-0410) Strobe signal connector

Pin No.	Description	
1	x	Can not be used
2	x	Can not be used
3	Strobe signal out	TTL
4	GND	TTL



(3) CON3 (53048-0210) IR-cut filter connector

Pin No.	Description	
1	IR_A	IR Filter
2	IR_B	

(4) CON10 (53048-0410) IRIS Connector

Pin No.	Description	
1	DAMP+	IRIS
2	DAMP-	
3	DRIVE+	
4	DRIVE-	

(5) CON14 (53048-0810) Motor drive signal Connector

Pin No.	Description	
1	FOCUS A-	Can not be used
2	FOCUS A+	
3	ZOOM A-	
4	ZOOM A+	
5	ZOOM B+	
6	ZOOM B-	
7	FOCUS B-	
8	FOCUS B+	

4. Lens Control Board

- J13
10. GND
 13. SIG-IN (GPIO 1_5)
 15. SIG-OUT (GPIO 3_3)
 16. RELEY (GPIO6_1)
 18. UART-TXD
 19. UART-RXD
 24. GND

- J03
1. RS485+
 2. RS485-

1번 pin

- J01
1. DC12V
 2. DC12V
 3. GND
 4. GND

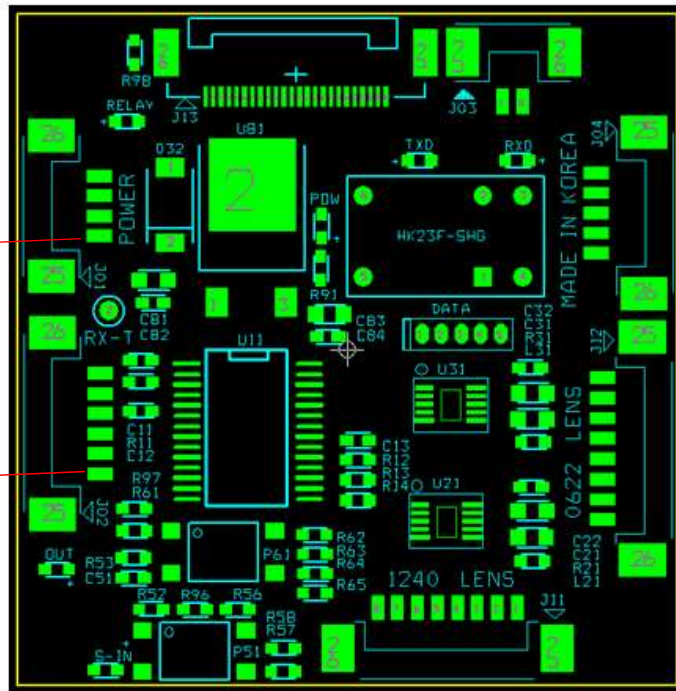
1번 Pin

- J02
1. DC12V
 2. GND
 3. TXD
 4. RXD
 5. RS485+
 6. RS485-

- J04
1. SIG-IN (GPIO 1_5)
 2. SIG-OUT (GPIO 3_3)
 3. NC
 4. COM (GPIO 6_1)
 5. NO

J12 - 0622 LENS 장착용

1. FB-
2. FB+
3. ZB-
4. ZB+
5. ZA-
6. ZA+
7. FA-
8. FA+



J11 - 1240 LENS 장착용

1. FA+
2. FA-
3. ZA+
4. ZA-
5. ZB+
6. ZB-
7. FB+
8. FB-

12~40mm

Lens connection

5. PCB Drawing

